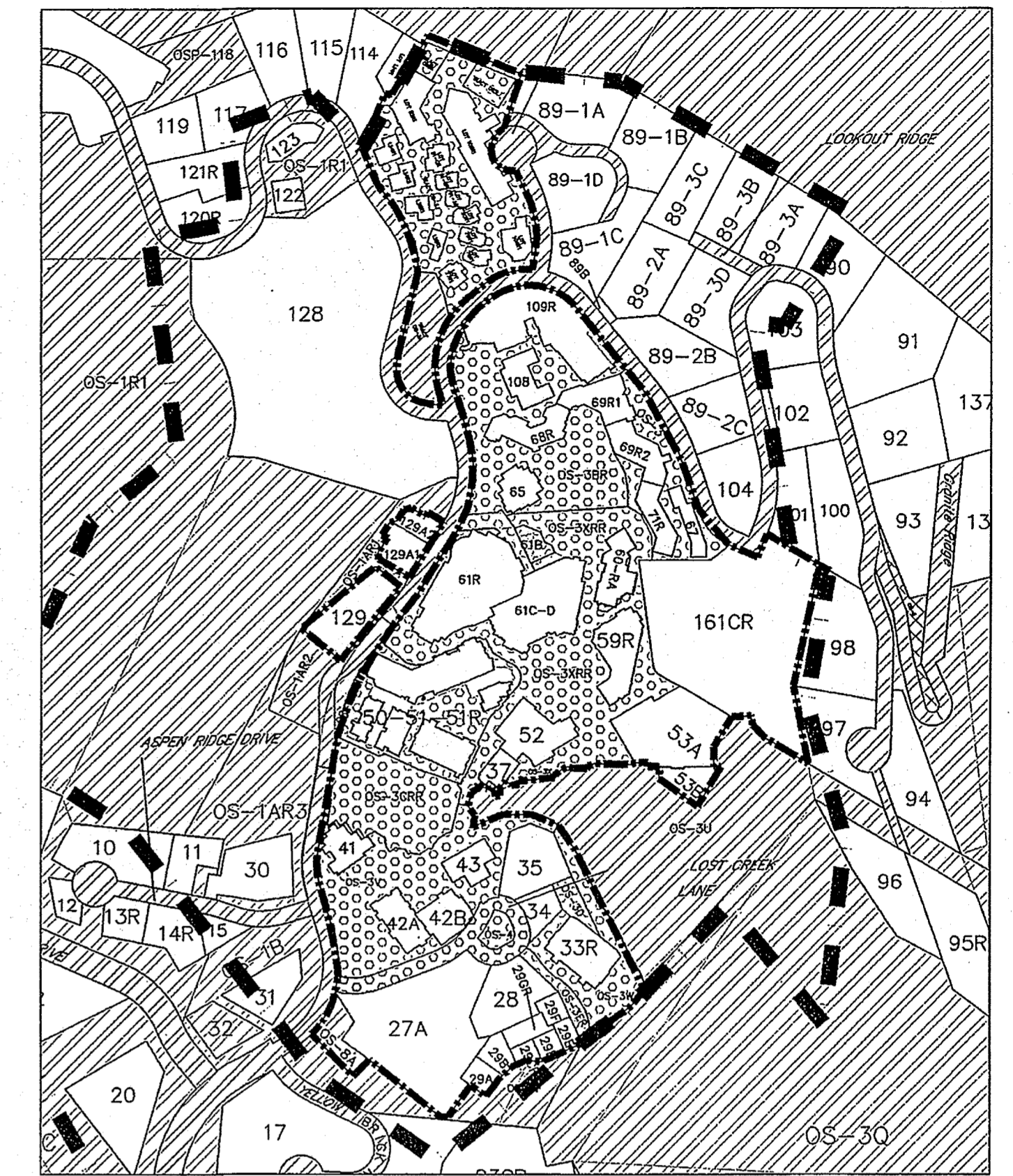


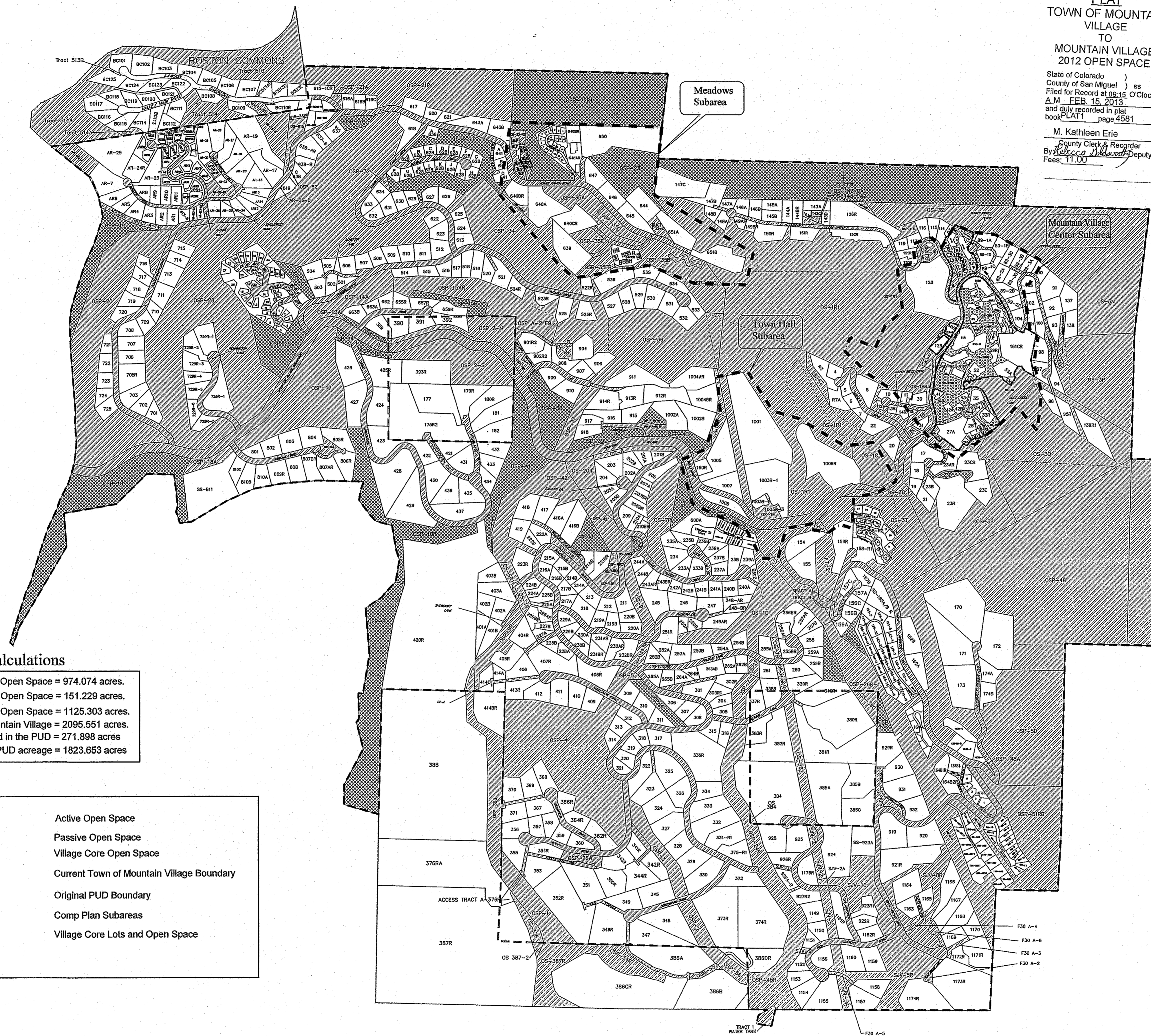
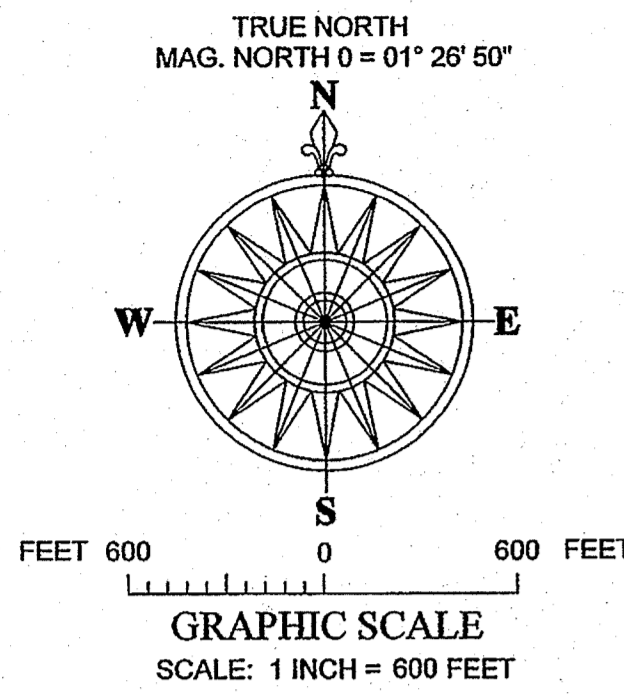
426872
 Page 1 of 1
 SAN MIGUEL COUNTY, CO
 M. KATHLEEN ERIE, CLERK-RECORDER
 02-15-2013 09:19 AM Recordings Fee \$11.00

**426872
 PLAT
 TOWN OF MOUNTAIN
 VILLAGE
 TO
 MOUNTAIN VILLAGE
 2012 OPEN SPACE**

State of Colorado)
 County of San Miguel) ss
 Filed for Record at 09:15 O'Clock
 A.M. FEB 15 2013
 and duly recorded in plat
 book PLAT 1 page 4581
 M. Kathleen Erie
 County Clerk & Recorder
 By *[Signature]* Deputy
 Fees: 11.00



Village Core Inset Map - 1" = 300'

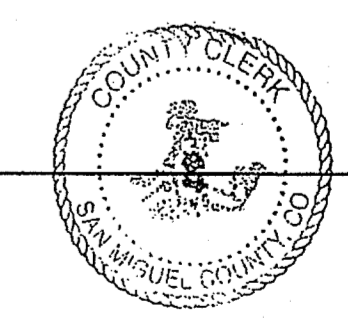


2012 Open Space Calculations
 Active Open Space = 974.074 acres.
 Passive Open Space = 151.229 acres.
 Total Open Space = 1125.303 acres.
 Current Mountain Village = 2095.551 acres.
 1999 TMV Acreage not included in the PUD = 271.898 acres
 Total PUD acreage = 1823.653 acres

Legend

- Active Open Space
- Passive Open Space
- Village Core Open Space
- Current Town of Mountain Village Boundary
- Original PUD Boundary
- Comp Plan Subareas
- Village Core Lots and Open Space

RECORDER'S CERTIFICATE:
 This map was filed for record in the office of the San Miguel County Clerk and Recorded on this 15 day of February, 2013, at Plat Book PL # 1, Page 4581, Reception No. 426872 Time 9:15 AM
[Signature]
 San Miguel County Clerk



PAGE 4581

2012 Open Space Map