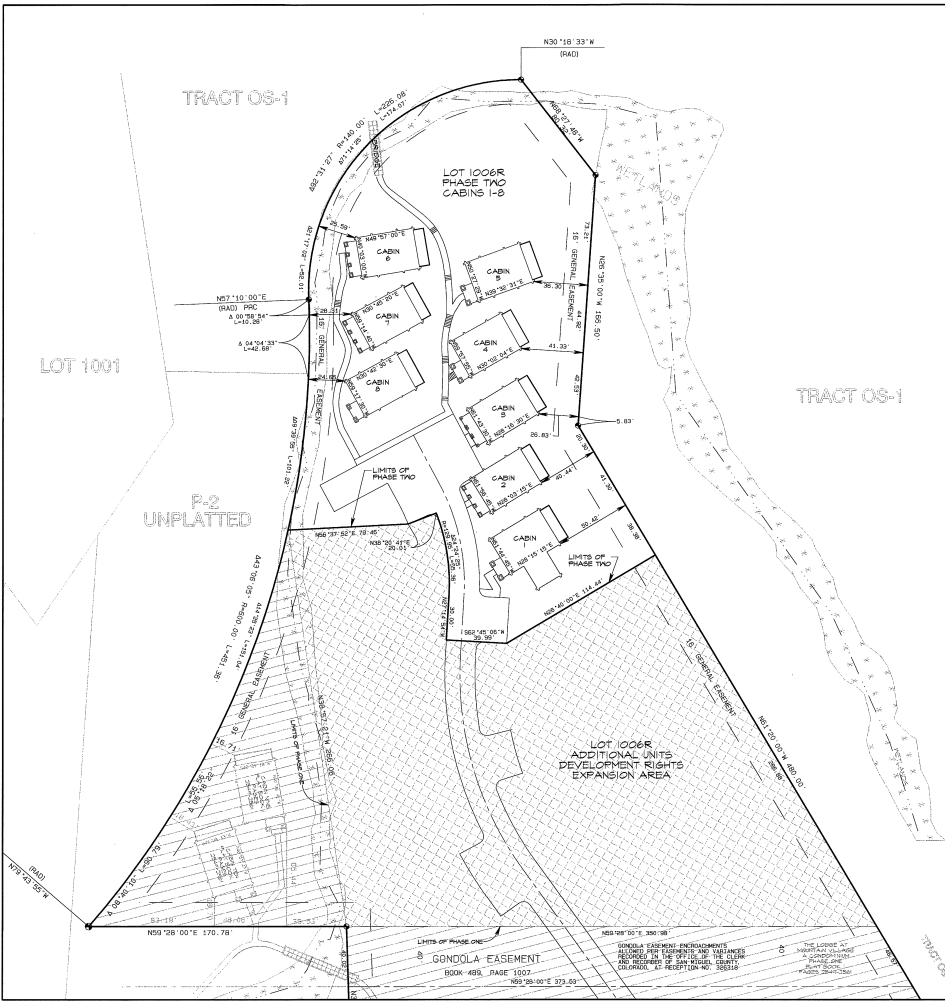


**THE LODGE AT MOUNTAIN VILLAGE
 A CONDOMINIUM
 PHASE TWO**

LOT 1006R, TOWN OF MOUNTAIN VILLAGE, SAN MIGUEL COUNTY, COLORADO



CABIN	FLOOR	INT. S.F.	DECK/PATIO S.F.
ONE	LOWER	1126	32
	FIRST	1123	265
	UPPER	470	265
	TOTAL	2719	562
TWO	LOWER	827	372
	FIRST	893	372
	UPPER	470	372
	TOTAL	2208	1116
THREE	LOWER	857	372
	FIRST	881	372
	UPPER	470	372
	TOTAL	2208	1116
FOUR	LOWER	857	265
	FIRST	881	265
	UPPER	470	265
	TOTAL	2208	805
FIVE	LOWER	857	372
	FIRST	881	372
	UPPER	470	372
	TOTAL	2208	1116
SIX	LOWER	842	35
	FIRST	881	366
	UPPER	470	366
	TOTAL	2193	767
SEVEN	LOWER	842	35
	FIRST	881	366
	UPPER	470	366
	TOTAL	2193	767
EIGHT	LOWER	842	35
	FIRST	881	372
	UPPER	470	372
	TOTAL	2193	807

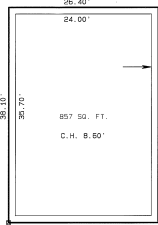
NOTES:
 ACCORDING TO COLORADO LAW YOU MUST COMMENCE ANY LEGAL ACTION BASED UPON ANY DEFECT IN THIS SURVEY WITHIN THREE YEARS AFTER YOU FIRST DISCOVER SUCH DEFECT. IN NO EVENT MAY ANY ACTION BASED UPON ANY DEFECT IN THIS SURVEY BE COMMENCED MORE THAN TEN YEARS FROM THE DATE OF CERTIFICATION SHOWN HEREON.
 C.H. - INDICATES CEILING HEIGHT
 L.C.E. - INDICATES LIMITED COMMON ELEMENT
 SEE SHEET 1 FOR ADDITIONAL NOTES, OWNERS CERTIFICATE AND SURVEYORS CERTIFICATE
 SEE SHEET 2 FOR SITE PLAN AND UNIT AREA SUMMARY SHEET
 SEE SHEETS 3 THROUGH 9 FOR CABIN 1 THROUGH 8 DETAILS
 SEE SHEET 6 FOR CABIN 1 THROUGH 8 ELEVATION DETAILS



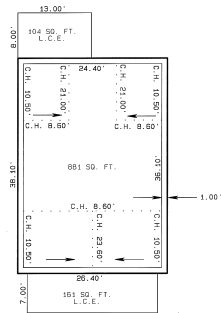
GRAPHIC SCALE 1"=30'
 0 30 60 90
PAGE 2610

PREPARED BY:
ROCKY MOUNTAIN LAND SURVEYING, INC.
 818 ADAMS RANCH RD., SUITE 2A
 P.O. BOX 5088 TELLURIDE, COLORADO 81426
 (970) 728-6186 (970) 728-0228 Fax
 SEPTEMBER 9, 1999
 SHEET 2 OF 6 SHEETS

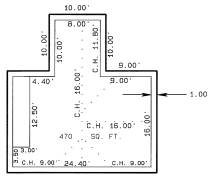
THE LODGE AT MOUNTAIN VILLAGE
A CONDOMINIUM
PHASE TWO
 LOT 1006R, TOWN OF MOUNTAIN VILLAGE, SAN MIGUEL COUNTY, COLORADO
CABINS FOUR THROUGH SIX



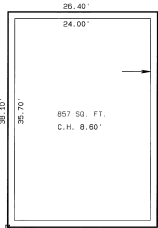
CABIN FOUR LOWER FLOOR



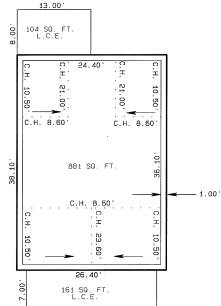
CABIN FOUR FIRST FLOOR



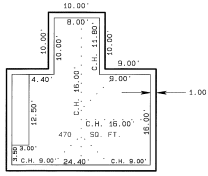
CABIN FOUR UPPER FLOOR



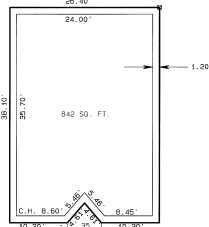
CABIN FIVE LOWER FLOOR



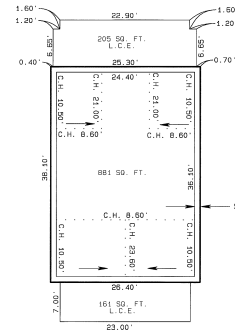
CABIN FIVE FIRST FLOOR



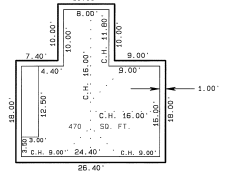
CABIN FIVE UPPER FLOOR



CABIN SIX LOWER FLOOR



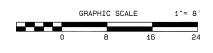
CABIN SIX FIRST FLOOR



CABIN SIX UPPER FLOOR

NOTES:
 ACCORDING TO COLORADO LAW YOU MUST COMMENCE ANY LEGAL ACTION BASED UPON ANY DEFECT IN THIS SURVEY WITHIN THREE YEARS AFTER YOU FIRST DISCOVER SUCH DEFECT. IN NO EVENT MAY ANY ACTION BASED UPON ANY DEFECT IN THIS SURVEY BE COMMENCED MORE THAN TEN YEARS FROM THE DATE OF CERTIFICATION SHOWN HEREON.
 C.H. - INDICATES CEILING HEIGHT
 C.E. - INDICATES COMMON ELEMENT
 L.C.E. - INDICATES LIMITED COMMON ELEMENT
 SEE SHEET 1 FOR ADDITIONAL NOTES, OWNERS CERTIFICATE AND SURVEYORS CERTIFICATE
 SEE SHEET 2 FOR SITE PLAN AND UNIT AREA SUMMARY CHART
 SEE SHEETS 3 THROUGH 5 FOR CABIN 1 THROUGH 6 DETAILS
 SEE SHEET 6 FOR CABIN 1 THROUGH 6 ELEVATION DETAILS
 * INDICATES TIE POINT TO PROPERTY LINE AS SHOWN ON SHEET 2

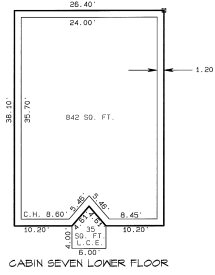
PREPARED FOR:
 TELLURIDE MOUNTAIN VILLAGE VENTURES, L.L.C.
 A Delaware Limited Liability Company
 P.O. BOX 11048 TELLURIDE CO 81428



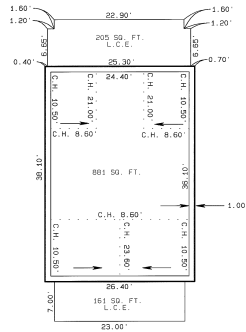
PREPARED BY:
 ROCKY MOUNTAIN LAND SURVEYING INC.
 315 ADAMS RANCH ROAD, SUITE 2A
 P.O. BOX 8394 TELLURIDE CO 81428
 (970) 728-8356 Fax

PAGE 2612

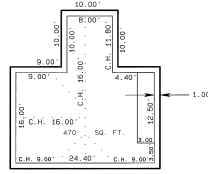
**THE LODGE AT MOUNTAIN VILLAGE
 A CONDOMINIUM
 PHASE TWO
 LOT 1006R, TOWN OF MOUNTAIN VILLAGE, SAN MIGUEL COUNTY, COLORADO
 CABINS SEVEN AND EIGHT**



CABIN SEVEN LOWER FLOOR

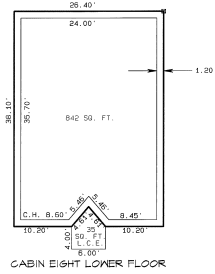


CABIN SEVEN FIRST FLOOR

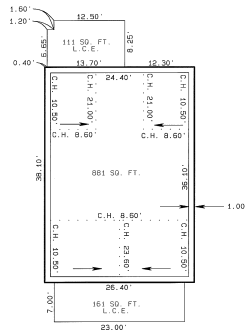


CABIN SEVEN UPPER FLOOR

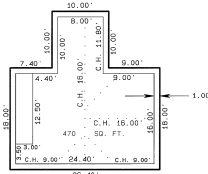
NOTES:
 ACCORDING TO COLORADO LAW YOU MUST COMMENCE ANY LEGAL ACTION BASED UPON ANY DEFECT IN THIS SURVEY WITHIN THREE YEARS AFTER YOU FIRST DISCOVER SUCH DEFECT. IN NO EVENT MAY ANY ACTION BASED UPON ANY DEFECT IN THIS SURVEY BE COMMENCED MORE THAN TEN YEARS FROM THE DATE OF CERTIFICATION SHOWN HEREON.
 C.H. - INDICATES CEILING HEIGHT
 L.C.E. - INDICATES COMMON ELEMENT
 L.C.E. - INDICATES LIMITED COMMON ELEMENT
 SEE SHEET 1 FOR ADDITIONAL NOTES, OWNERS CERTIFICATE AND SURVEYORS CERTIFICATE
 SEE SHEET 2 FOR SITE PLAN AND UNIT AREA SUMMARY TABLE
 SEE SHEETS 3 THROUGH 5 FOR CABIN 1 THROUGH 8 DETAILS
 SEE SHEET 6 FOR CABIN 1 THROUGH 8 ELEVATION DETAILS
 ■ INDICATES TIE POINT TO PROPERTY LINE AS SHOWN ON SHEET 2



CABIN EIGHT LOWER FLOOR

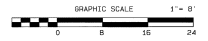


CABIN EIGHT FIRST FLOOR



CABIN EIGHT UPPER FLOOR

PREPARED FOR:
 TELLURIDE MOUNTAIN VILLAGE VENTURES, L.L.C.
 A Delaware Limited Liability Company
 P.O. BOX 11045 TELLURIDE CO 81425

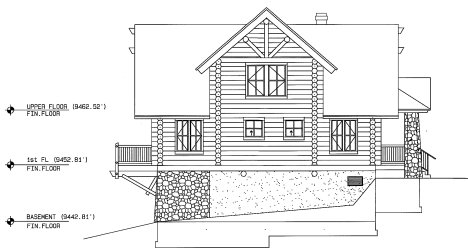


PREPARED BY:
 ROCKY MOUNTAIN LAND SURVEYS INC.
 315 ADAMS RANCH ROAD, SUITE 2A
 P.O. BOX 3894 TELLURIDE CO 81425
 (970) 726-0156 TELLURIDE CO 81425

PAGE 2613

SEPTEMBER 14, 1999
 SHEET 5 OF 6 SHEETS

**THE LODGE AT MOUNTAIN VILLAGE
 A CONDOMINIUM
 PHASE TWO
 LOT 100R, TOWN OF MOUNTAIN VILLAGE, SAN MIGUEL COUNTY, COLORADO
 CABINS ONE THROUGH EIGHT ELEVATIONS**



CABIN ONE
 LEFT SIDE ELEVATION
 Scale: 1"=8'



CABIN FOUR
 LEFT SIDE ELEVATION
 Scale: 1"=8'



CABIN SEVEN
 LEFT SIDE ELEVATION
 Scale: 1"=8'



CABIN TWO
 LEFT SIDE ELEVATION
 Scale: 1"=8'



CABIN FIVE
 LEFT SIDE ELEVATION
 Scale: 1"=8'



CABIN EIGHT
 LEFT SIDE ELEVATION
 Scale: 1"=8'



CABIN THREE
 LEFT SIDE ELEVATION
 Scale: 1"=8'



CABIN SIX
 LEFT SIDE ELEVATION
 Scale: 1"=8'

NOTES:

ACCORDING TO COLORADO LAW YOU MUST COMMENCE ANY LEGAL ACTION BASED UPON ANY DEFECT IN THIS SURVEY WITHIN THREE YEARS AFTER YOU FIRST DISCOVER SUCH DEFECT, IN NO EVENT MAY ANY ACTION BASED UPON ANY DEFECT IN THIS SURVEY BE COMMENCED MORE THAN TEN YEARS FROM THE DATE OF CERTIFICATION SHOWN HEREON.

C.H. - INDICATES CEILING HEIGHT
 C. - INDICATES COMMON ELEMENT
 L.C.E. - INDICATES LIMITED COMMON ELEMENT

SEE SHEET 1 FOR ADDITIONAL NOTES, OWNERS CERTIFICATE AND SURVEYORS CERTIFICATE
 SEE SHEET 2 FOR SITE PLAN AND UNIT AREA SUMMARY CHART
 SEE SHEETS 3 THROUGH 5 FOR CABIN 1 THROUGH 8 DETAILS
 SEE SHEET 6 FOR CABIN 1 THROUGH 8 ELEVATION DETAILS

CEILING HEIGHTS FOR THE INTERIORS OF THE UNITS APPEAR ON THEIR RESPECTIVE DETAIL SHEETS.

PREPARED FOR:
 TELLURIDE MOUNTAIN VILLAGE VENTURES, L.L.C.
 A Delaware Limited Liability Company
 P.O. BOX 1045 TELLURIDE, CO 81420

PREPARED BY:
 ROCKY MOUNTAIN LAND SURVEYING INC.
 313 ADAMS RANCH RD. BUILDING 2, SUITE 2G
 P.O. BOX 3394 TELLURIDE, COLORADO 81420-0394
 (970) 728-0298 Fax

PAGE 2614