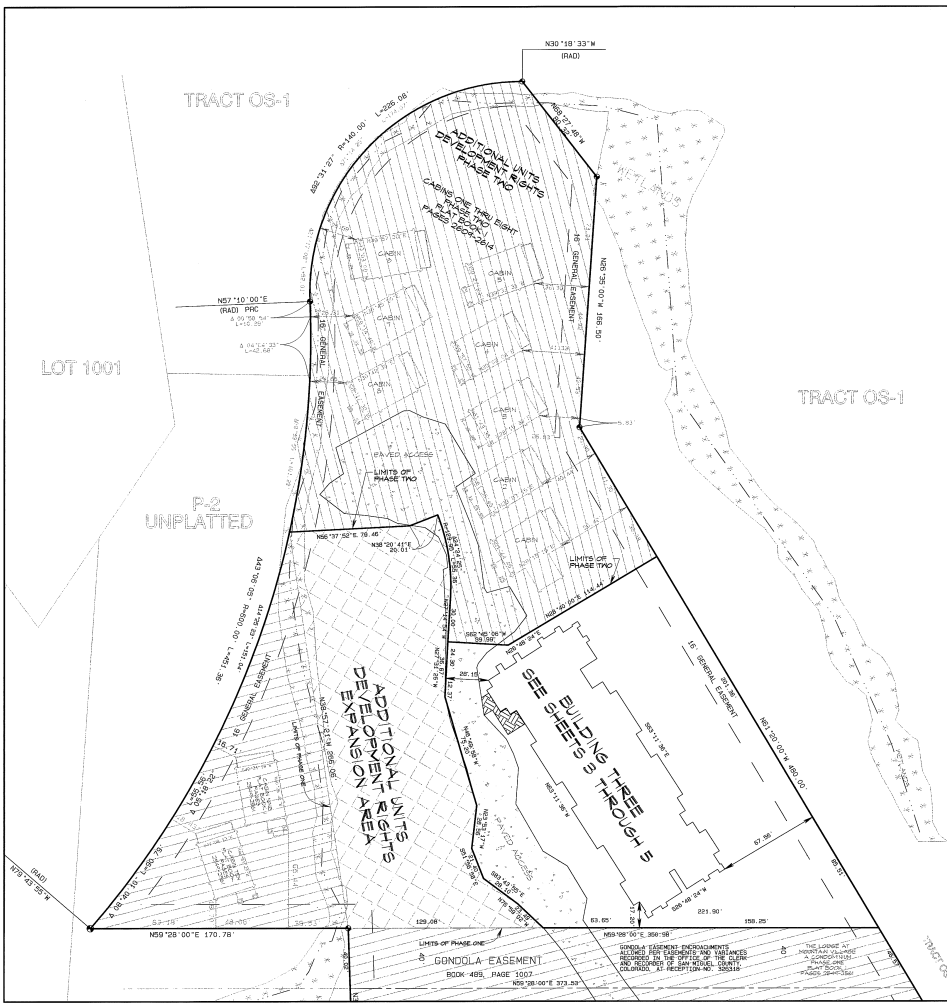


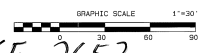
**THE LODGE AT MOUNTAIN VILLAGE
 A CONDOMINIUM
 PHASE THREE**

LOT 1066-R, TOWN OF MOUNTAIN VILLAGE, SAN MIGUEL COUNTY, COLORADO
 BUILDING THREE - BUILDING LOCATION AND UNIT AREA SUMMARY



BUILDING THREE					
UNIT #	UNIT TYPE	UNIT #	LOFT S.F.	D/P S.F.	STORAGE
101	LODGE EFF.	505	0	61	0
102	LOCK-OFF	231	0	0	0
104	LODGE EFF.	562	0	50	14
105	LODGE EFF.	561	0	50	14
106	LODGE EFF.	560	0	135	0
108	LOCK-OFF	231	0	0	0
109	LODGE EFF.	505	0	61	0
110	LODGE EFF.	560	0	135	0
111	LODGE EFF.	560	0	135	0
112	LODGE EFF.	552	0	81	0
113	LODGE EFF.	551	0	81	0
115	LOCK-OFF	6751	0	698	28
202	LODGE EFF.	505	0	61	0
203	LOCK-OFF	231	0	0	0
204	LODGE EFF.	562	0	50	14
205	LODGE EFF.	560	0	135	0
206	LOCK-OFF	231	0	0	0
209	LODGE EFF.	505	0	61	0
210	LODGE EFF.	505	0	61	0
211	LODGE EFF.	560	0	135	0
212	LOCK-OFF	231	0	0	0
213	LODGE EFF.	505	0	61	0
215	LODGE EFF.	231	0	0	0
216	LOCK-OFF	7507	0	729	28
304	LODGE EFF. W/LOFT	553	240	32	0
304	LOCK-OFF	231	0	0	0
309	LODGE W/LOFT	560	330	49	15
310	LODGE W/LOFT	560	330	49	15
313	LODGE W/LOFT	560	330	49	15
316	LODGE EFF. W/LOFT	553	240	32	0
316	LOCK-OFF	231	0	0	0
316	LOCK-OFF	231	0	0	0
316	LODGE EFF. W/LOFT	553	240	32	0
317	LODGE W/LOFT	560	330	49	15
318	LODGE W/LOFT	560	330	49	15
319	LODGE W/LOFT	560	330	49	15
320	LODGE W/LOFT	560	330	49	15
321	LODGE EFF. W/LOFT	553	240	32	0
324	LOCK-OFF	7511	0	0	0
324	LOCK-OFF	7516	2800	522	96

NOTES:
 ACCORDING TO COLORADO LAW YOU MUST COMMENCE ANY LEGAL ACTION BASED UPON ANY DEFECT IN THIS SURVEY WITHIN THREE YEARS AFTER YOU FIRST DISCOVER SUCH DEFECT. IN NO EVENT MAY ANY ACTION BASED UPON ANY DEFECT IN THIS SURVEY BE COMMENCED MORE THAN TEN YEARS FROM THE DATE OF CERTIFICATION SHOWN HEREON.
 C. H. - INDICATES CATCHING HEIGHT
 C. E. - INDICATES COMMON ELEMENT
 L. E. - INDICATES LIMITED COMMON ELEMENT
 SEE SHEET 1 FOR ADDITIONAL NOTES, OWNERS CERTIFICATE AND SURVEYORS CERTIFICATE
 SEE SHEET 2 FOR SITE PLAN AND UNIT AREA SUMMARY CHART
 SEE SHEETS 3 AND 4 FOR BUILDING 3 DETAILS
 SEE SHEET 5 FOR BUILDING 3 ELEVATION DETAILS



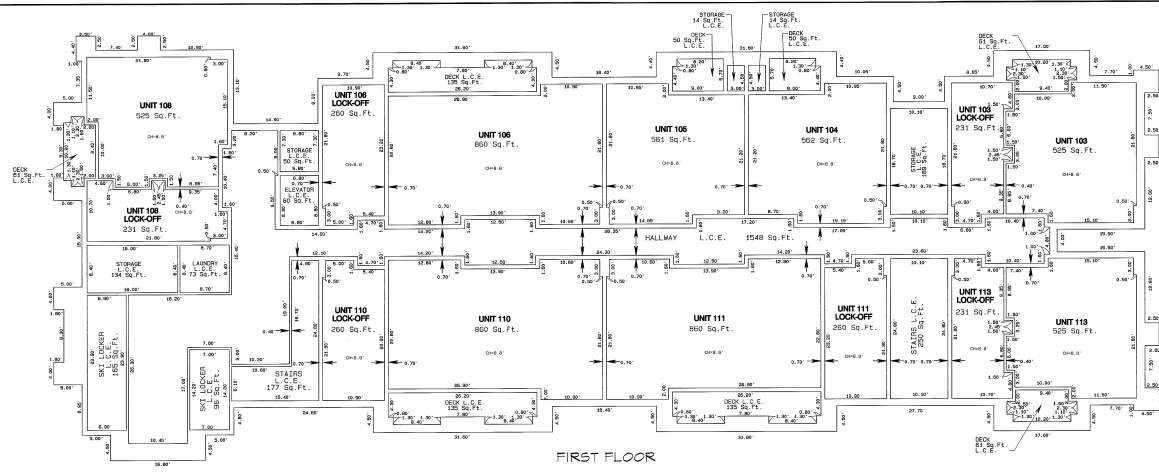
PAGE 2652

PREPARED BY:
 ROCKY MOUNTAIN LAND SURVEYING, INC.
 818 ADAMS RANCH RD, SUITE 2A
 P.O. BOX 8588 TELLURIDE, COLORADO 81425
 (970) 728-8186
 (970) 728-0229 Fax

THE LODGE AT MOUNTAIN VILLAGE A CONDOMINIUM PHASE THREE

LOT 1006-R, TOWN OF MOUNTAIN VILLAGE,
SAN MIGUEL COUNTY, COLORADO

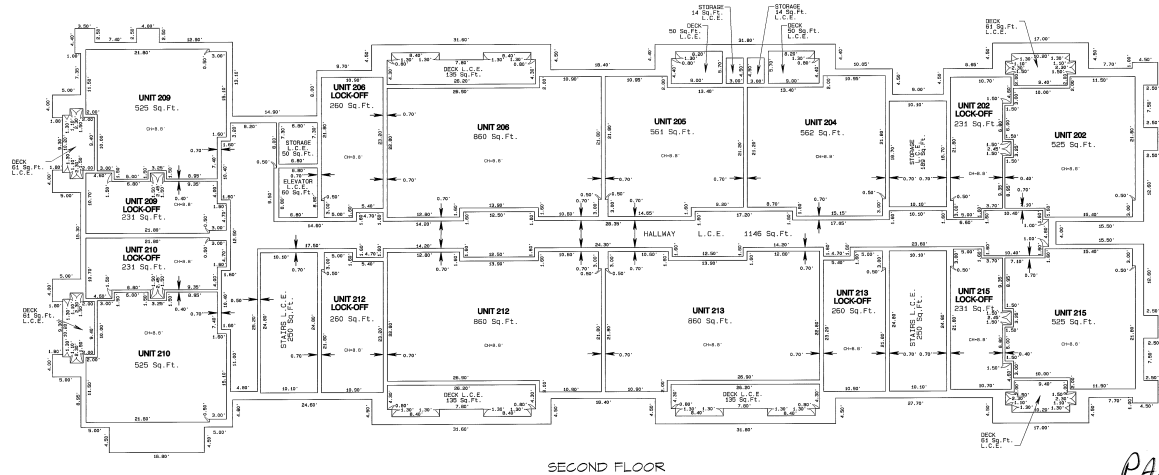
BUILDING THREE - FLOORS ONE AND TWO



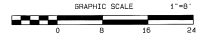
FIRST FLOOR

NOTES:
ACCORDING TO COLORADO LAW YOU MUST COMMENCE ANY LEGAL ACTION
BASED UPON ANY DEFECT IN THIS SURVEY WITHIN THREE YEARS AFTER
YOU FIRST DISCOVER SUCH DEFECT. IN NO EVENT MAY ANY ACTION BASED
UPON ANY DEFECT IN THIS SURVEY BE COMMENCED MORE THAN TEN YEARS
FROM THE DATE OF CERTIFICATION SHOWN HEREON.

D - INDICATES DECK HEIGHT
C.E. - INDICATES COMMON ELEMENT
L.C.E. - INDICATES LIMITED COMMON ELEMENT
SEE SHEET 1 FOR ADDITIONAL NOTES, OWNERS CERTIFICATE
AND SURVEYORS CERTIFICATE
SEE SHEET 2 FOR 315 PLAN AND UNIT AREA SUMMARY CHART
SEE SHEETS 3 AND 4 FOR BUILDING 3 DETAILS
SEE SHEET 5 FOR BUILDING 3 ELEVATION DETAILS



SECOND FLOOR

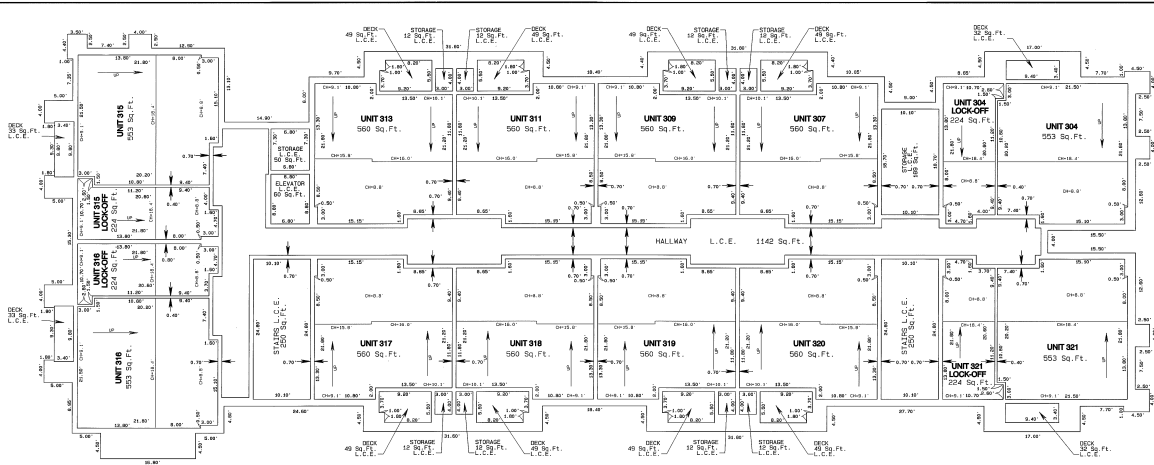


PREPARED BY:
ROCKY MOUNTAIN LAND SURVEYING INC.
830 ADAMS RANCH RD. SUITE 2A
P.O. BOX 2008 TELLURIDE, COLORADO 81425
(970) 726-8196
NOVEMBER 20, 2009
SHEET 3 OF 5 SHEETS

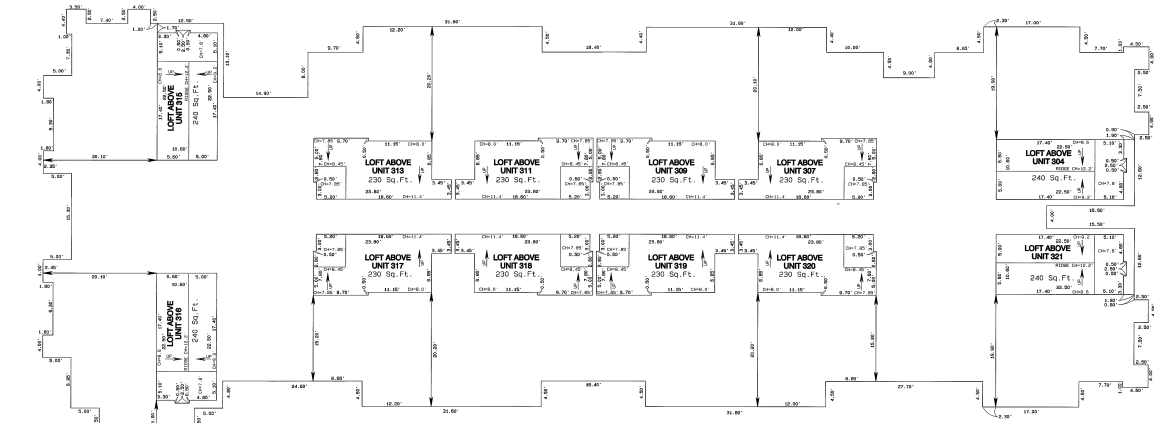
THE LODGE AT MOUNTAIN VILLAGE A CONDOMINIUM PHASE THREE

LOT 1006-R, TOWN OF MOUNTAIN VILLAGE,
SAN MIGUEL COUNTY, COLORADO

BUILDING THREE - FLOOR THREE AND LOFTS



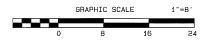
THIRD FLOOR



LOFT LEVEL

NOTES:
ACCORDING TO COLORADO LAW YOU MUST COMMENCE ANY LEGAL ACTION
BASED UPON ANY DEFECT IN THIS SURVEY WITHIN THREE YEARS AFTER
YOU FIRST DISCOVER SUCH DEFECT. IN NO EVENT MAY ANY ACTION BASED
UPON ANY DEFECT IN THIS SURVEY BE COMMENCED MORE THAN TEN YEARS
FROM THE DATE OF CERTIFICATION SHOWN HEREON.

C.H. - INDICATES CEILING HEIGHT
L.C.E. - INDICATES COMMON ELEMENT
L.L.E. - INDICATES LIMITED COMMON ELEMENT
SEE SHEET 1 FOR ADDITIONAL NOTES, OWNERS CERTIFICATE
AND SURVEYORS CERTIFICATE
SEE SHEET 2 FOR 3D PLAN AND UNIT AREA SUMMARY CHART
SEE SHEETS 3 AND 4 FOR BUILDING 3D DETAILS
SEE SHEET 5 FOR BUILDING 3 ELEVATION DETAILS



PREPARED BY:
ROCKY MOUNTAIN LAND SURVEYING, INC.
500 ADAMS RANCH RD, SUITE 2A
P.O. BOX 2034 TELLURIDE, COLORADO 81420
(719) 726-6196 (719) 726-0251 fax
NOVEMBER 30, 1998
SHEET 4 OF 5 SHEETS

PAGE 2654

THE LODGE AT MOUNTAIN VILLAGE A CONDOMINIUM PHASE THREE

LOT 1006-R, TOWN OF MOUNTAIN VILLAGE,
SAN MIGUEL COUNTY, COLORADO

BUILDING THREE - ELEVATION DETAILS



BUILDING THREE - SOUTHWESTERLY ELEVATION VIEW

NOTES

ACCORDING TO COLORADO LAW YOU MUST COMMENCE ANY LEGAL ACTION BASED UPON ANY DEFECT IN THIS SURVEY WITHIN THREE YEARS AFTER YOU FIRST DISCOVER SUCH DEFECT - IN NO EVENT MAY ANY ACTION BASED UPON ANY DEFECT IN THIS SURVEY BE COMMENCED MORE THAN TEN YEARS FROM THE DATE OF CERTIFICATION SHOWN HEREIN.

- C.H. - INDICATES CEILING HEIGHT
- C.E. - INDICATES COMMON ELEMENT
- L.C.E. - INDICATES LIMITED COMMON ELEMENT

SEE SHEET 1 FOR ADDITIONAL NOTES, OWNERS CERTIFICATE AND SURVEYORS CERTIFICATE AND UNIT AREA SUMMARY CHART
SEE SHEET 2 FOR SITE PLAN AND UNIT AREA SUMMARY CHART
SEE SHEETS 3 AND 4 FOR BUILDING 3 DETAILS
SEE SHEET 5 FOR BUILDING 3 ELEVATION DETAILS



PREPARED BY:
ROCKY MOUNTAIN LAND SURVEYING, INC.
80 ADAMS RANCH RD., SUITE 2A
P.O. BOX 3308 TELLURIDE, COLORADO 81435
(970) 726-0186 (970) 726-0228 FAX

NOVEMBER 30, 1998
SHEET 5 OF 5 SHEETS

PAGE 2655