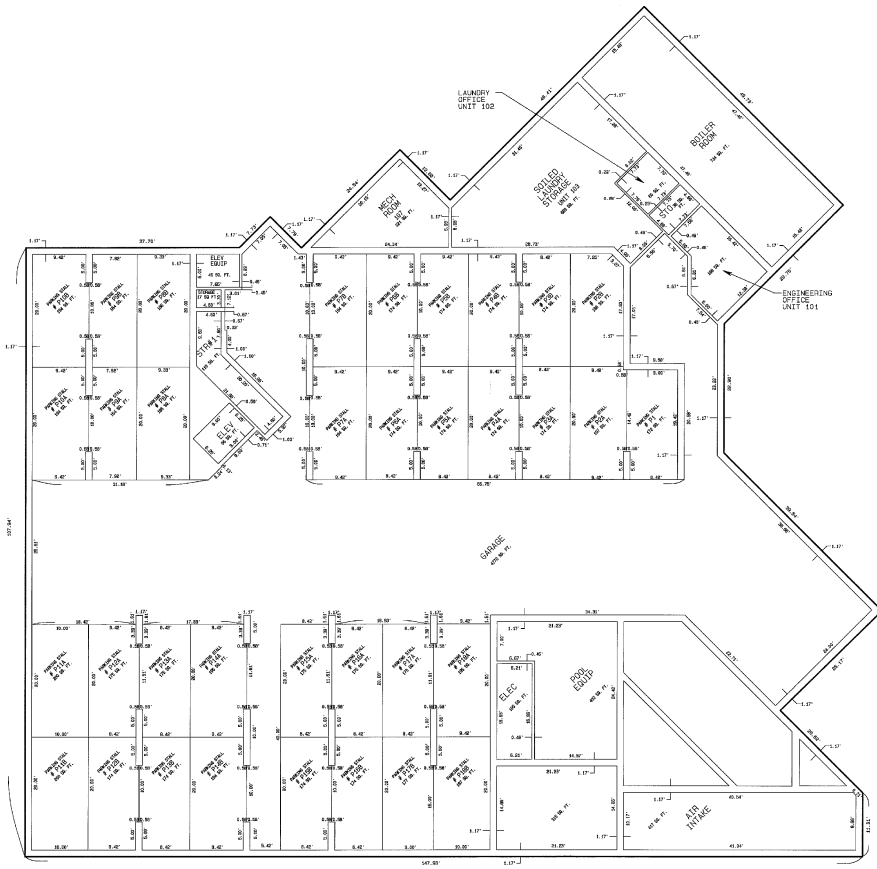


THE LODGE AT MOUNTAIN VILLAGE
A CONDOMINIUM
PHASE ONE
 LOT 1006R, TOWN OF MOUNTAIN VILLAGE, SAN MIGUEL COUNTY, COLORADO
BUILDING ONE PARKING LEVEL



NOTES:

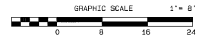
ACCORDING TO COLORADO LAW YOU MUST COMMENCE ANY LEGAL ACTION BASED UPON ANY DEFECT IN THIS SURVEY WITHIN THREE YEARS AFTER YOU FIRST DISCOVER SUCH DEFECT. IN NO EVENT MAY ANY ACTION BASED UPON ANY DEFECT IN THIS SURVEY BE COMMENCED MORE THAN TEN YEARS FROM THE DATE OF IDENTIFICATION SHOWN HEREON.

ALL SPACE IN BUILDING ONE AND OTHER AREAS SHOWN ON THIS SHEET ARE COMMON ELEMENTS

- C.H. - INDICATES CEILING HEIGHT
- C.E. - INDICATES COMMON ELEMENT
- L.C.E. - INDICATES LIMITED COMMON ELEMENT

SEE SHEET 1 FOR ADDITIONAL NOTES, OWNERS CERTIFICATE AND SURVEYORS CERTIFICATE
 SEE SHEET 2 FOR SITE PLAN AND UNIT AREA SUMMARY CHART
 SEE SHEETS 3 THROUGH 5 FOR BUILDING ONE DETAILS
 SEE SHEET 6 THROUGH 10 FOR BUILDING TWO DETAILS
 SEE SHEET 11 FOR BUILDING ONE AND BUILDING TWO ELEVATION DETAILS
 SEE SHEET 12 FOR CABINS NINE AND TEN DETAILS
 SEE SHEET 13 FOR CABINS NINE AND TEN ELEVATION DETAILS

PREPARED FOR:
 TELLURIDE MOUNTAIN VILLAGE VENTURES, L.L.C.
 A Delaware Limited Liability Company
 P.O. BOX 11045 TELLURIDE, CO 81435

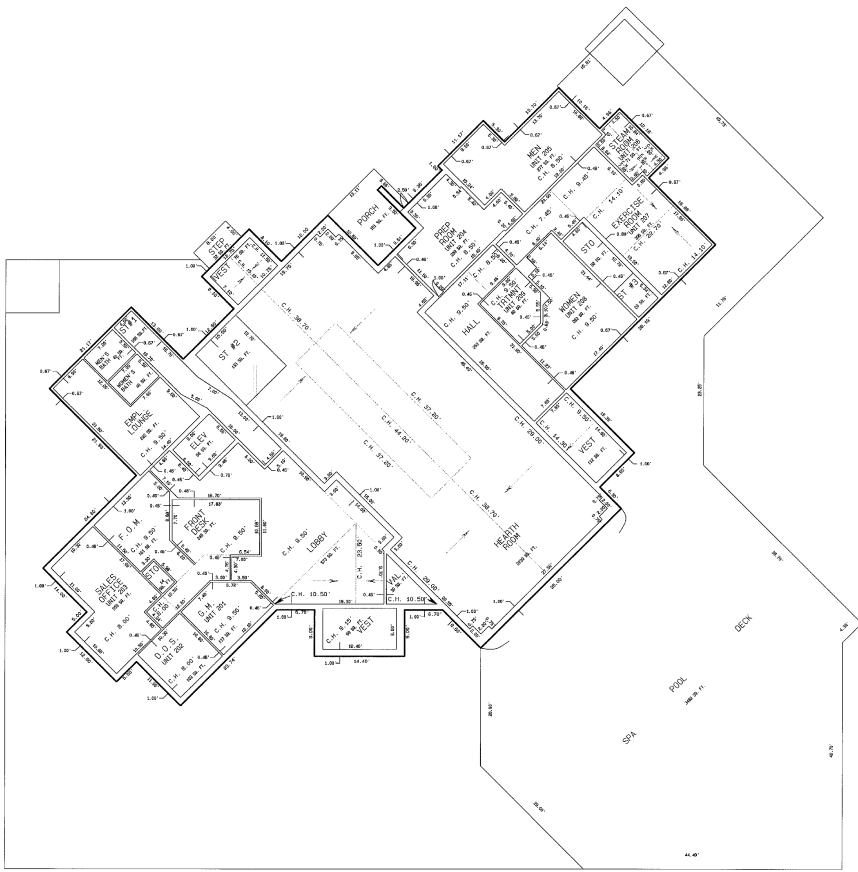


PREPARED BY:
 ROCKY MOUNTAIN LAND SURVEYING, INC.
 318 ADAMS RANCH RD., BUILDING 2, SUITE 2C
 P.O. BOX 3304 TELLURIDE, COLORADO 81436-3304
 (970) 726-5152 (970) 726-0251 Fax

PAGE 2551

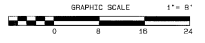
APRIL 20, 1999
 SHEET 3 OF 5 SHEETS

THE LODGE AT MOUNTAIN VILLAGE
A CONDOMINIUM
PHASE ONE
LOT 1006R, TOWN OF MOUNTAIN VILLAGE, SAN MIGUEL COUNTY, COLORADO
BUILDING ONE MAIN FLOOR



NOTES:
ACCORDING TO COLORADO LAW YOU MUST COMMENCE ANY LEGAL ACTION BASED UPON ANY DEFECT IN THIS SURVEY WITHIN THREE YEARS AFTER YOU FIRST DISCOVER SUCH DEFECT, IN NO EVENT MAY ANY ACTION BASED UPON ANY DEFECT IN THIS SURVEY BE COMMENCED MORE THAN TEN YEARS FROM THE DATE OF CERTIFICATION SHOWN HEREON.
ALL SPACE IN BUILDING ONE AND OTHER AREAS SHOWN ON THIS SHEET ARE COMMON ELEMENTS
C.H. - INDICATES CEILING HEIGHT
C.E. - INDICATES COMMON ELEMENT
L.C.E. - INDICATES LIMITED COMMON ELEMENT
SEE SHEET 1 FOR ADDITIONAL NOTES, OWNERS CERTIFICATE AND SURVEYORS CERTIFICATE
SEE SHEET 2 FOR SITE PLAN AND UTIL. AREA SUMMARY CHART
SEE SHEETS 3 THROUGH 5 FOR BUILDING ONE DETAILS
SEE SHEETS 6 THROUGH 10 FOR BUILDING TWO DETAILS
SEE SHEET 11 FOR BUILDING ONE AND BUILDING TWO ELEVATION DETAILS
SEE SHEET 12 FOR EXTERIOR WINE AND TEN DETAILS
SEE SHEET 13 FOR CABING NINE AND TEN ELEVATION DETAILS

PREPARED FOR:
TELLURIDE MOUNTAIN VILLAGE VENTURES, L.L.C.
A Delaware Limited Liability Company
P.O. BOX 11045 TELLURIDE, CO 81435

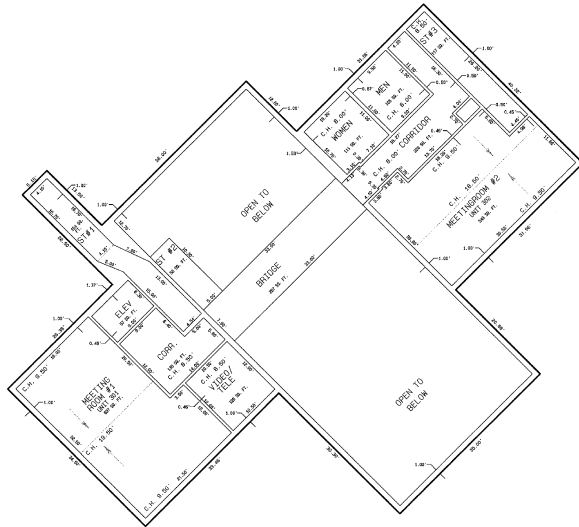


PREPARED BY:
ROCKY MOUNTAIN LAND SURVEYING, INC.
313 ADAMS RANCH RD., BUILDING 2, SUITE 22
P.O. BOX 3894 TELLURIDE, COLORADO 81425-3894
(970) 725-0399 (970) 725-0298 fax

PAGE 2552

APRIL 30, 1999
SHEET 4 OF 13 SHEETS

THE LODGE AT MOUNTAIN VILLAGE
A CONDOMINIUM
PHASE ONE
LOT 1006R, TOWN OF MOUNTAIN VILLAGE, SAN MIGUEL COUNTY, COLORADO
BUILDING ONE UPPER FLOOR



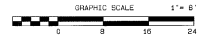
NOTES:
ACCORDING TO COLORADO LAW YOU MUST COMMENCE ANY LEGAL ACTION BASED UPON ANY DEFECT IN THIS SURVEY WITHIN THREE YEARS AFTER YOU FIRST DISCOVER SUCH DEFECT. IN NO EVENT MAY ANY ACTION BASED UPON ANY DEFECT IN THIS SURVEY BE COMMENCED MORE THAN TEN YEARS FROM THE DATE OF CERTIFICATION SHOWN HEREON.

ALL SPACE IN BUILDING ONE AND OTHER AREAS SHOWN ON THIS SHEET ARE COMMON ELEMENTS

C.H. - INDICATES CEILING HEIGHT
C.C. - INDICATES COMMON ELEMENT
L.C.E. - INDICATES LIMITED COMMON ELEMENT

SEE SHEET 1 FOR ADDITIONAL NOTES, OWNER'S CERTIFICATE AND SURVEYOR'S CERTIFICATE
SEE SHEET 2 FOR SITE PLAN AND UNIT AREA SUMMARY CHART
SEE SHEETS 3 THROUGH 5 FOR BUILDING ONE DETAILS
SEE SHEETS 6 THROUGH 8 FOR ELEVATION AND DETAILS
SEE SHEET 9 FOR BUILDING ONE AND BUILDING TWO ELEVATION DETAILS
SEE SHEET 10 FOR CABINETS NINE AND TEN DETAILS
SEE SHEET 11 FOR CABINETS NINE AND TEN ELEVATION DETAILS

PREPARED FOR:
TELLURIDE MOUNTAIN VILLAGE VENTURES, L.L.C.
A Delaware Limited Liability Company
P.O. BOX 11045 TELLURIDE, CO 81455

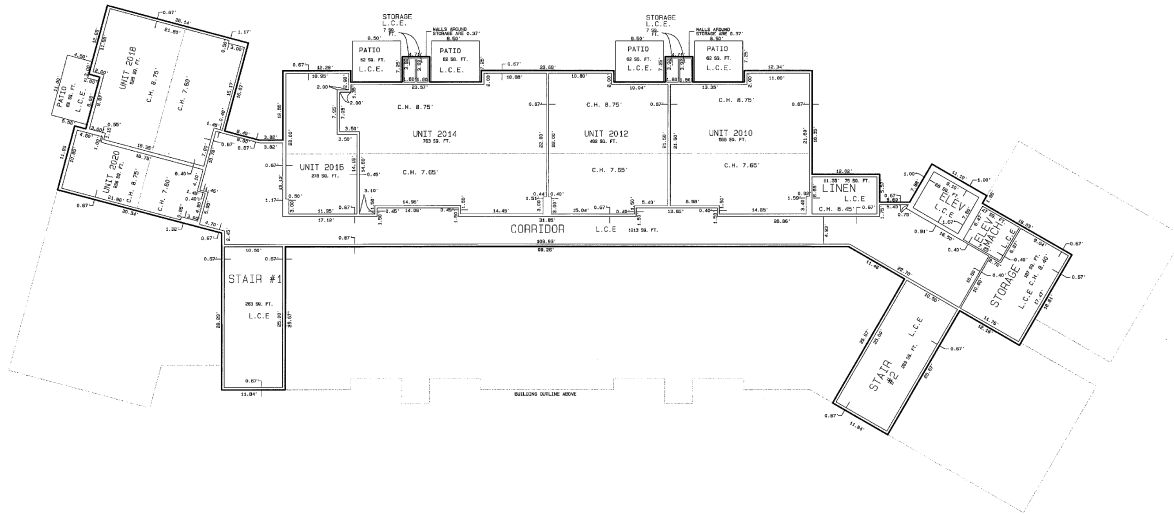


PREPARED BY:
ROCKY MOUNTAIN LAND SURVEYING INC.
315 ADAMS RANCH RD. BUILDING 2 SUITE 20
P.O. BOX 8894 TELLURIDE, COLORADO 81455-8894
(970) 726-8199

PAGE 2523

APRIL 30 1999
SHEET 9 OF 13 SHEETS

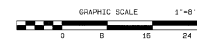
THE LODGE AT MOUNTAIN VILLAGE
A CONDOMINIUM
PHASE ONE
LOT 1006R, TOWN OF MOUNTAIN VILLAGE, SAN MIGUEL COUNTY, COLORADO
BUILDING TWO FIRST FLOOR
UNITS 2010, 2012, 2014, 2016, 2018, 2020



NOTES:
ACCORDING TO COLORADO LAW YOU MUST COMMENCE ANY LEGAL ACTION BASED UPON ANY DEFECT IN THIS SURVEY WITHIN THREE YEARS AFTER YOU FIRST DISCOVER SUCH DEFECT, OR NO LATER THAN ANY ACTION BASED UPON ANY DEFECT IN THIS SURVEY BE COMMENCED MORE THAN TEN YEARS FROM THE DATE OF CERTIFICATION SHOWN HEREON.

C.H. = INDICATES CEILING HEIGHT
L.C.E. = INDICATES LIMITED COMMON ELEMENT
L.C.E. = INDICATES LIMITED COMMON ELEMENT

SEE SHEET 1 FOR ADDITIONAL NOTES, OWNERS CERTIFICATE AND SURVEYORS CERTIFICATE
SEE SHEET 2 FOR SITE PLAN AND UNIT FLOOR SUMMARY CHART
SEE SHEETS 3 THROUGH 5 FOR BUILDING ONE DETAILS
SEE SHEETS 6 THROUGH 8 FOR BUILDING TWO DETAILS
SEE SHEET 9 THROUGH 11 FOR BUILDING TWO ELEVATION DETAILS
SEE SHEET 12 FOR BUILDING ONE AND BUILDING TWO ELEVATION DETAILS
SEE SHEET 13 FOR CABINS NINE AND TEN ELEVATION DETAILS

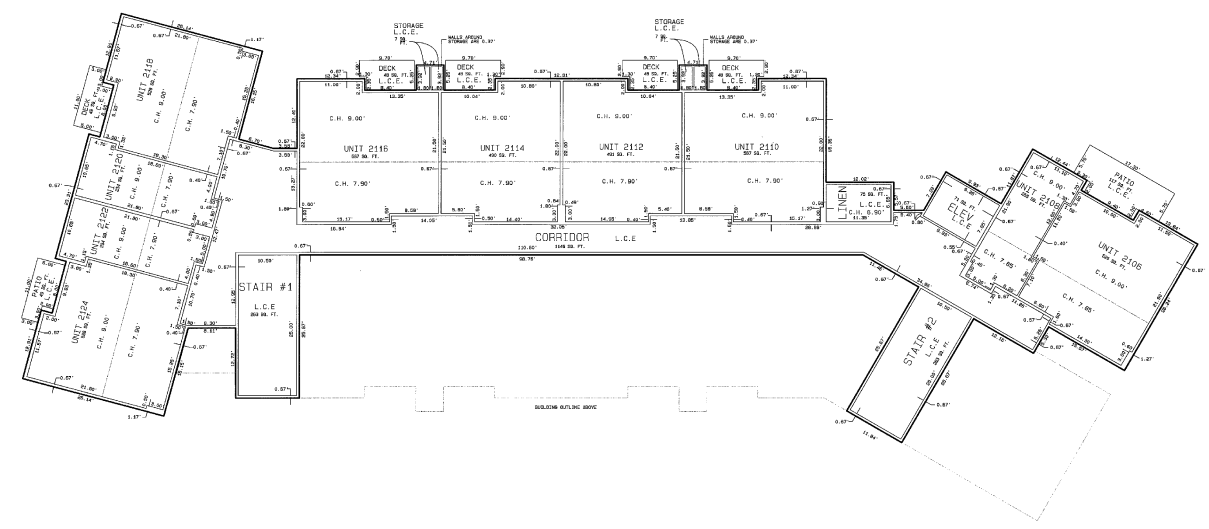


PREPARED BY:
ROCKY MOUNTAIN LAND SURVEYING, INC.
318 ADAMS RANCH RD., BUILDING 2, SUITE 2C
P.O. BOX 3334 TELLURIDE, COLORADO 81425-3334
(970) 725-8156 (970) 725-0581 fax

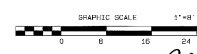
PAGE 25 54

APR 15, 2020
SHEET 6 OF 8 SHEETS

THE LODGE AT MOUNTAIN VILLAGE
A CONDOMINIUM
PHASE ONE
LOT 1006R, TOWN OF MOUNTAIN VILLAGE, SAN MIGUEL COUNTY, COLORADO
BUILDING TWO SECOND FLOOR
UNITS 2106, 2108, 2110, 2112, 2114, 2116, 2118, 2120, 2122, 2124



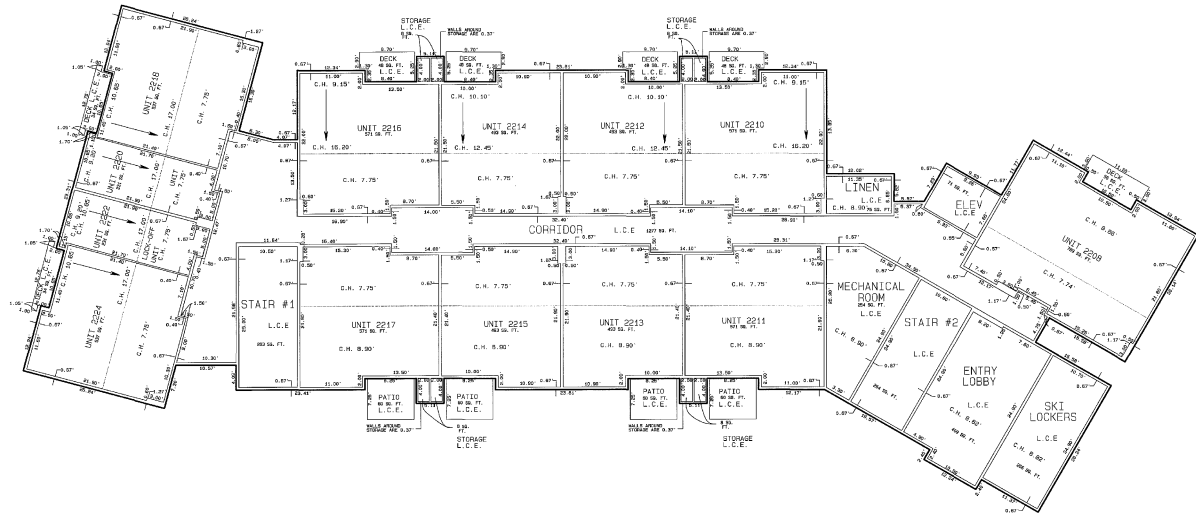
NOTES
ACCORDING TO COLORADO LAW YOU MUST COMMENCE ANY LEGAL ACTION BASED UPON ANY DEFECT IN THIS SURVEY WITHIN THREE YEARS AFTER YOU FIRST DISCOVER SUCH DEFECT, OR IN NO EVENT ANY LATER ACTION BASED UPON ANY DEFECT IN THIS SURVEY BE COMMENCED MORE THAN TEN YEARS FROM THE DATE OF CERTIFICATION SHOWN HEREIN.
C.H. - INDICATES CENTER LINE HEIGHTS
C.E. - INDICATES COMMON ELEMENTS
L.C.E. - INDICATES LIMITED COMMON ELEMENTS
SEE SHEET 1 FOR ADDITIONAL NOTES, OWNERS CERTIFICATE AND SURVEYORS CERTIFICATE
SEE SHEET 2 FOR SITE PLAN AND UNIT AREA SUMMARY CHART
SEE SHEETS 3 THROUGH 5 FOR BUILDING ONE DETAILS
SEE SHEETS 6 THROUGH 8 FOR BUILDING TWO DETAILS
SEE SHEET 11 FOR BUILDING ONE AND BUILDING TWO ELEVATION DETAILS
SEE SHEET 12 FOR CADDIS NINE AND TEN DETAILS
SEE SHEET 13 FOR CADDIS NINE AND TEN ELEVATION DETAILS



PREPARED BY:
ROCKY MOUNTAIN LAND SURVEYING, INC.
315 ADAMS RANCH RD., BUILDING 2, SUITE 202
P.O. BOX 3334 TELLURIDE, COLORADO 81415-3334
(970) 725-0200
APRIL 30, 1999
SHEET 1 OF 15 SHEETS

PAGE 2555

THE LODGE AT MOUNTAIN VILLAGE
A CONDOMINIUM
PHASE ONE
LOT 1006R, TOWN OF MOUNTAIN VILLAGE, SAN MIGUEL COUNTY, COLORADO
BUILDING TWO THIRD FLOOR
UNITS 2206, 2210, 2211, 2212, 2213, 2214, 2215, 2216, 2217, 2218, 2220, 2222, 2224

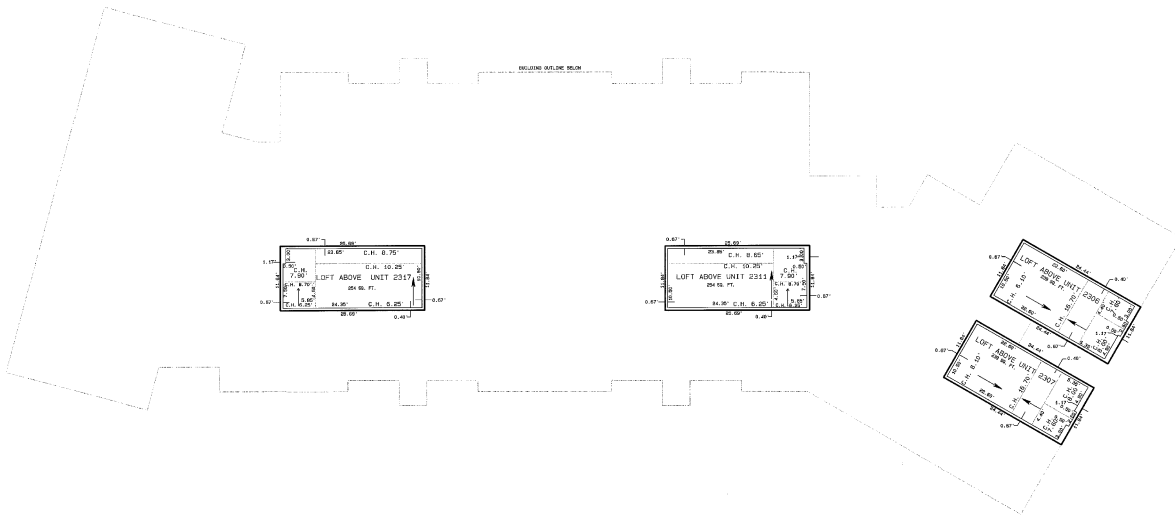


NOTES:
ACCORDING TO COLORADO LAW YOU MUST COMMENCE ANY LEGAL ACTION BASED UPON ANY DEFECT IN THIS SURVEY ACTION THREE YEARS AFTER THE FIRST DISCOVERY OR DEFECT, UNLESS YOU MAY ANY ACTION BASED UPON ANY DEFECT IN THIS SURVEY BE COMMENCED MORE THAN TEN YEARS FROM THE DATE OF CERTIFICATION SIGN HEREON.
C.H. - INDICATES CEILING HEIGHT
L.C.E. - INDICATES COMMON ELEMENT
L.C.E. - INDICATES LIMITED COMMON ELEMENT
SEE SHEET 1 FOR ADDITIONAL NOTES, OWNERS CERTIFICATE AND SURVEYORS CERTIFICATE
SEE SHEET 2 FOR SITE PLAN AND UNIT AREA COMPARISON CHART
SEE SHEETS 3 THROUGH 5 FOR BUILDING ONE DETAILS
SEE SHEETS 6 THROUGH 10 FOR BUILDING TWO DETAILS
SEE SHEET 11 FOR BUILDING ONE AND BUILDING TWO ELEVATION DETAILS
SEE SHEET 12 FOR CABINS NINE AND TEN DETAILS
SEE SHEET 13 FOR CABINS NINE AND TEN ELEVATION DETAILS



PREPARED BY:
ROCKY MOUNTAIN LAND SURVEYING INC.
318 ADAMS RANCH RD. BUILDING 2, SUITE 202
P.O. BOX 3524 TELLURIDE, COLORADO 81420-0354
(970) 726-8199

THE LODGE AT MOUNTAIN VILLAGE
A CONDOMINIUM
PHASE ONE
LOT 1006R, TOWN OF MOUNTAIN VILLAGE, SAN MIGUEL COUNTY, COLORADO
BUILDING TWO MEZZANINE LEVEL
LOFTS FOR UNITS 2306, 2307, 2311, 2317



NOTES:

ACCORDING TO COLORADO LAW YOU MUST COMMENCE ANY LEGAL ACTION BASED UPON ANY DEFECT IN THIS SURVEY WITHIN THREE YEARS AFTER YOU FIRST DISCOVER SUCH DEFECT. NO PARTY MAY TAKE ANY ACTION BASED UPON ANY DEFECT IN THIS SURVEY BE COMMENCED MORE THAN TEN YEARS FROM THE DATE OF CERTIFICATION SHOWN HEREON.

C.H. - INDICATES CEILING HEIGHT
C.E. - INDICATES COMMON ELEMENT
L.C.E. - INDICATES LIMITED COMMON ELEMENT

SEE SHEET 1 FOR ADDITIONAL NOTES, OWNER'S CERTIFICATE AND SURVEYORS CERTIFICATE
SEE SHEET 2 FOR SITE PLAN AND ONLY AREA SURVEYOR'S CHART
SEE SHEETS 3 THROUGH 5 FOR BUILDING ONE DETAILS
SEE SHEETS 6 THROUGH 10 FOR BUILDING TWO DETAILS
SEE SHEET 11 FOR BUILDING ONE AND BUILDING TWO ELEVATION DETAILS
SEE SHEET 12 FOR CASING NINE AND TEN DETAILS
SEE SHEET 13 FOR CASING NINE AND TEN ELEVATION DETAILS



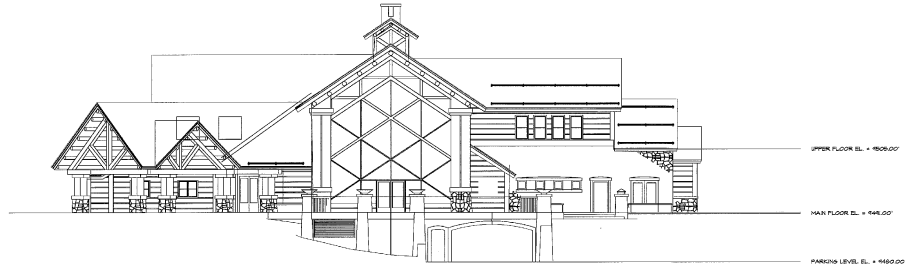
PREPARED BY:
ROCKY MOUNTAIN LAND SURVEYING, INC.
318 ADAMS RANCH RD., BUILDING 2, SUITE 20
P.O. BOX 2804 TELLURIDE, COLORADO 81429-2804
(970) 728-8199 (970) 728-0281 fax

PAGE 2558

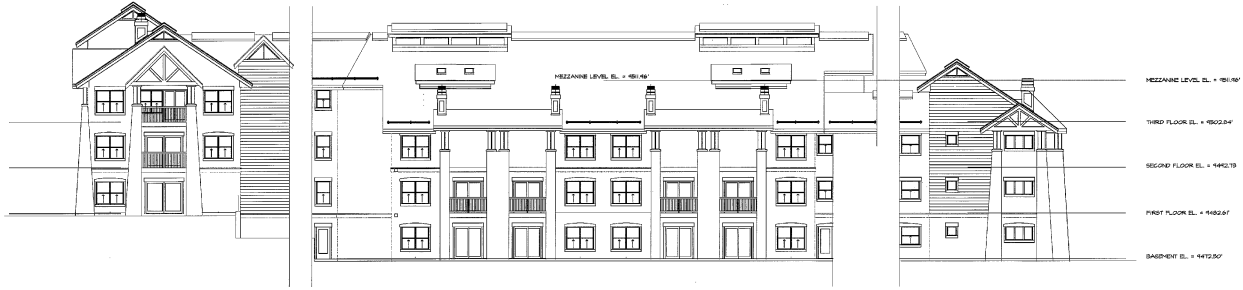
APR 10 1999
SHEET 10 OF 33 SHEETS

PREPARED FOR:
TELLURIDE MOUNTAIN VILLAGE VENTURES, L.L.C.
A DENVER LIMITED LIABILITY COMPANY
P.O. BOX 1048 TELLURIDE, CO 81428

**THE LODGE AT MOUNTAIN VILLAGE
A CONDOMINIUM
PHASE ONE**
LOT 1006R, TOWN OF MOUNTAIN VILLAGE, SAN MIGUEL COUNTY, COLORADO
BUILDING ONE AND TWO ELEVATIONS



BUILDING ONE NORTH ELEVATION



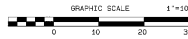
BUILDING TWO NORTH ELEVATION

NOTES:

ACCORDING TO COLORADO LAW YOU MUST COMMENCE ANY LEGAL ACTION BASED UPON ANY DEFECT IN THIS SURVEY WITHIN THREE YEARS AFTER YOU FIRST DISCOVER SUCH DEFECT. IN NO EVENT MAY ANY ACTION BASED UPON ANY DEFECT IN THIS SURVEY BE COMMENCED MORE THAN TEN YEARS FROM THE DATE OF CERTIFICATION SHOWN HEREON.

- C.H. - INDICATES CEILING HEIGHT
- C.E. - INDICATES COMMON ELEMENT
- L.C.E. - INDICATES LIMITED COMMON ELEMENT

- SEE SHEET 1 FOR ADDITIONAL NOTES, OWNER CERTIFICATE AND SURVEYORS CERTIFICATE
- SEE SHEET 2 FOR SITE PLAN AND UNIT AREA SUMMARY CHART
- SEE SHEETS 3 THROUGH 5 FOR BUILDING ONE DETAILS
- SEE SHEETS 6 THROUGH 10 FOR BUILDING TWO DETAILS
- SEE SHEET 11 FOR BUILDING ONE AND BUILDING TWO ELEVATION DETAILS
- SEE SHEET 12 FOR CABINS NINE AND TEN DETAILS
- SEE SHEET 13 FOR CABINS NINE AND TEN ELEVATION DETAILS

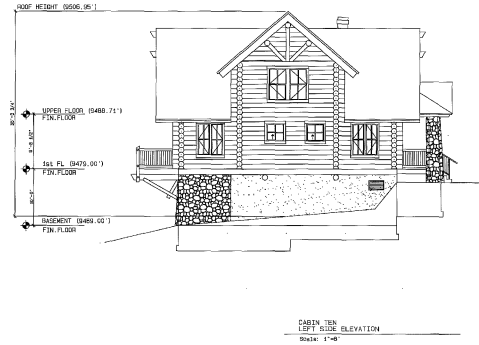
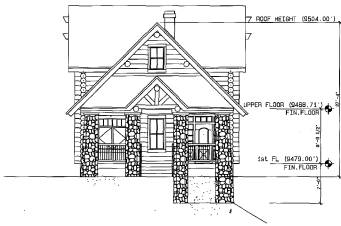
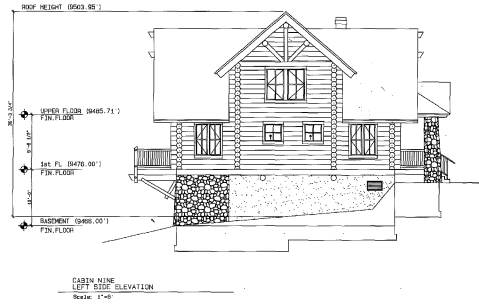


PREPARED BY:
ROCKY MOUNTAIN LAND SURVEYING, INC.
315 ADAMS RANCH RD. BUILDING 2, SUITE 20
P.O. BOX 8038 TELLURIDE, COLORADO 81428
(970) 726-9196 (970) 726-0281 (fax)

PAGE 2559

APRIL 30, 1999 SHEET 11 OF 13 SHEETS

**THE LODGE AT MOUNTAIN VILLAGE
 A CONDOMINIUM
 PHASE ONE
 LOT 1006R, TOWN OF MOUNTAIN VILLAGE, SAN MIGUEL COUNTY, COLORADO
 CABINS NINE AND TEN ELEVATIONS**



NOTES:
 ACCORDING TO COLORADO LAW YOU MUST COMMENCE ANY LEGAL ACTION BASED UPON ANY DEFECT IN THIS SURVEY WITHIN THREE YEARS AFTER YOU FIRST DISCOVER SUCH DEFECT. IN NO EVENT SHALL ANY ACTION BE BRING UPON ANY DEFECT IN THIS SURVEY BE COMMENCED MORE THAN TEN YEARS FROM THE DATE OF CERTIFICATION SHOWN HEREON.
 C.H. - INDICATES CEILING HEIGHT
 C.E. - INDICATES COMMON ELEMENT
 L.C.E. - INDICATES LIMITED COMMON ELEMENT
 SEE SHEET 1 FOR ADDITIONAL NOTES, OWNERS CERTIFICATE AND SURVEYORS CERTIFICATE
 SEE SHEET 2 FOR SITE PLAN AND UNIT AREA SUMMARY CHART
 SEE SHEETS 3 THROUGH 5 FOR BUILDING ONE DETAILS
 SEE SHEETS 6 THROUGH 10 FOR BUILDING TWO DETAILS
 SEE SHEET 11 FOR BUILDING ONE AND BUILDING TWO ELEVATION DETAILS
 SEE SHEET 12 FOR CABINS NINE AND TEN DETAILS
 SEE SHEET 13 FOR CABINS NINE AND TEN ELEVATION DETAILS

PREPARED FOR:
 TELLURIDE MOUNTAIN VILLAGE VENTURES, L.L.C.
 A Delorsors Limited Liability Company
 P.O. BOX 10465 TELLURIDE, CO 81425

PREPARED BY:
 ROCKY MOUNTAIN LAND SURVEYING INC.
 818 ADAMS RANCH RD. BUILDING 2, SUITE 2C
 P.O. BOX 8884 TELLURIDE, COLORADO 81428-8884
 (970) 726-0258 fax

PAGE 2561

APRIL 20, 1999
 SHEET 13 OF 18 SHEETS