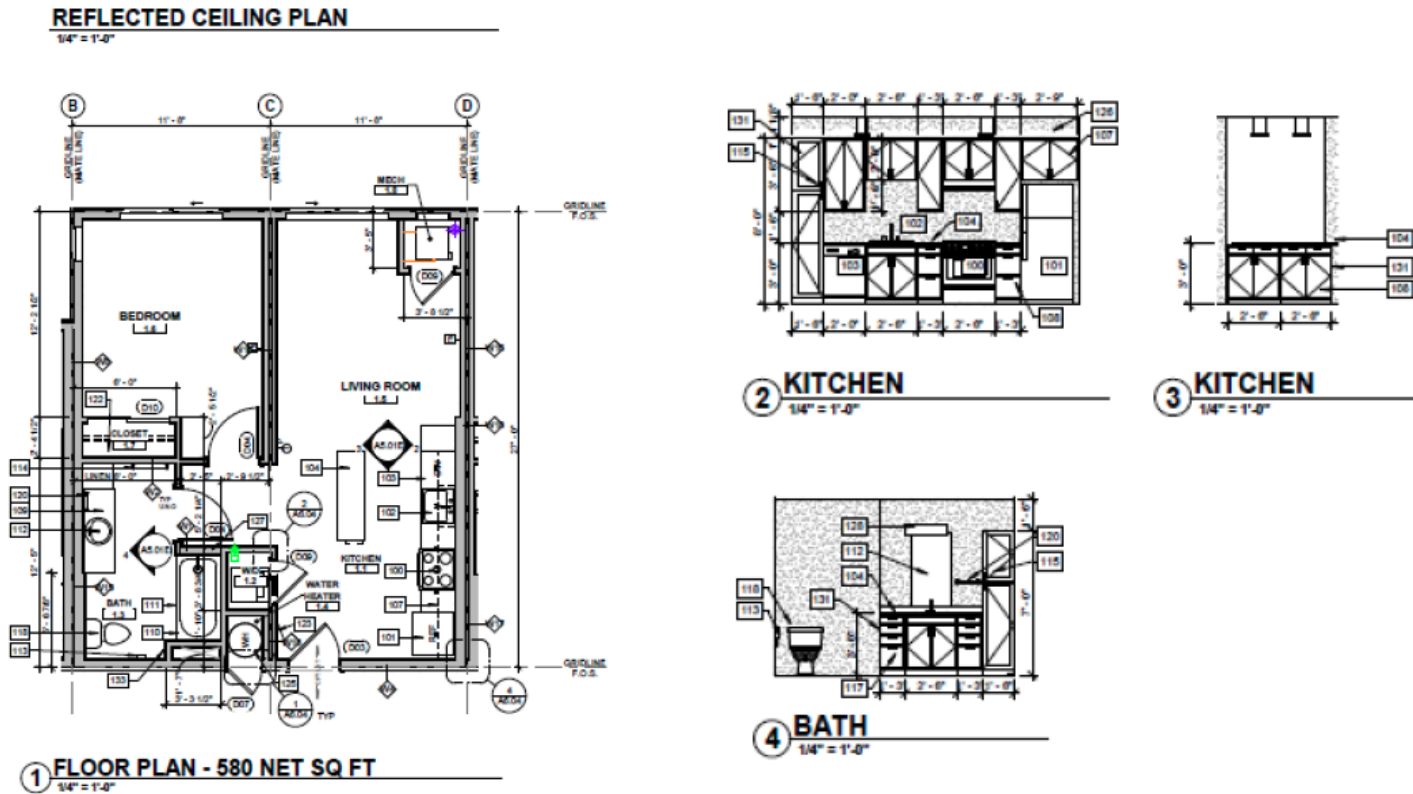


VCA Phase IV East Building Floor Plans and Photos

Typical One-Bedroom Floor Plan

This is the typical one-bedroom floorplan that shows the dimensions of each room and amenities. One bedroom, one bathroom and a washer and dryer are provided in each unit.

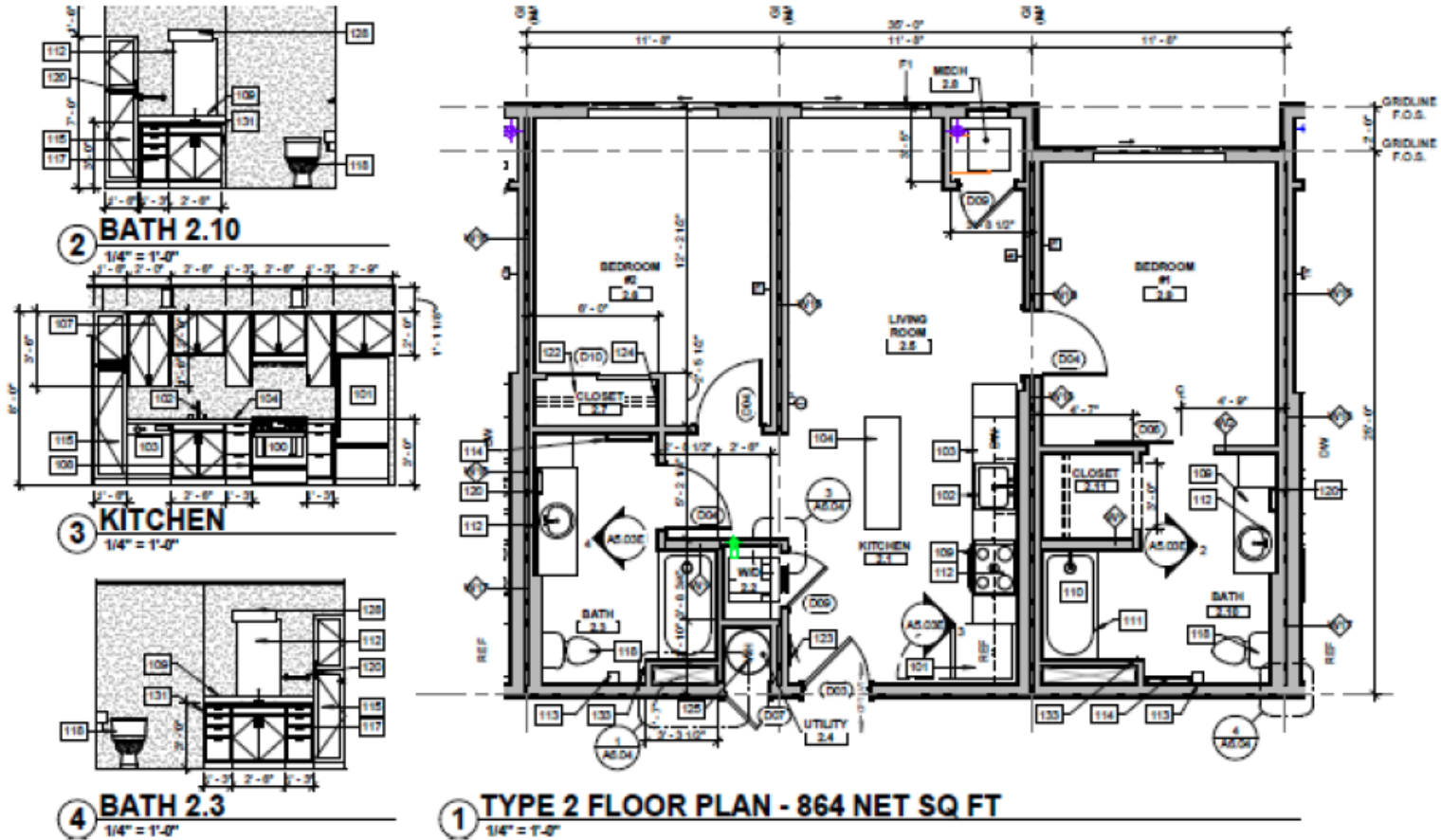
Note: the floor plans may be oriented differently depending on where the unit is located in the building.



Typical Two-Bedroom Floor Plan:

This is the typical two-bedroom floorplan that shows the dimensions of each room and amenities. Two bedrooms, two bathrooms and a washer and dryer are provided in each unit.

Note: the floor plans may be oriented differently depending on where the unit is located in the building.



In-Unit Photos:

Kitchen:



In-Unit Bathroom:

